



Table des matières

Introduction.....

Installation de PfSense.....

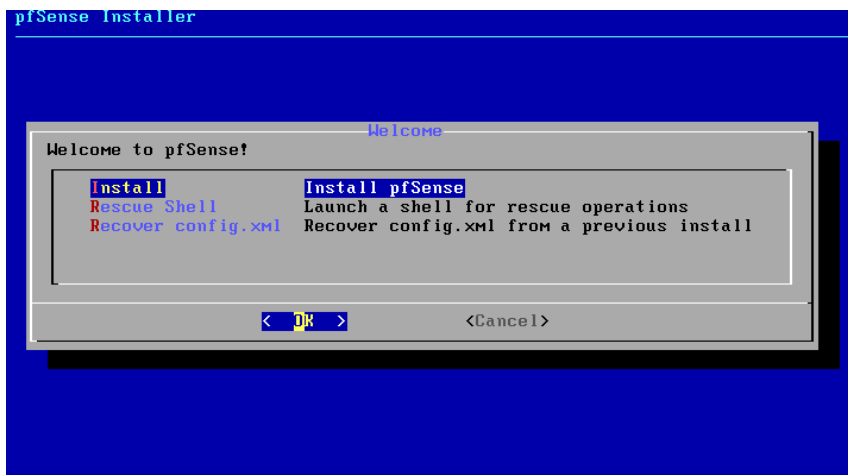
Configuration de l'interface.....

Introduction

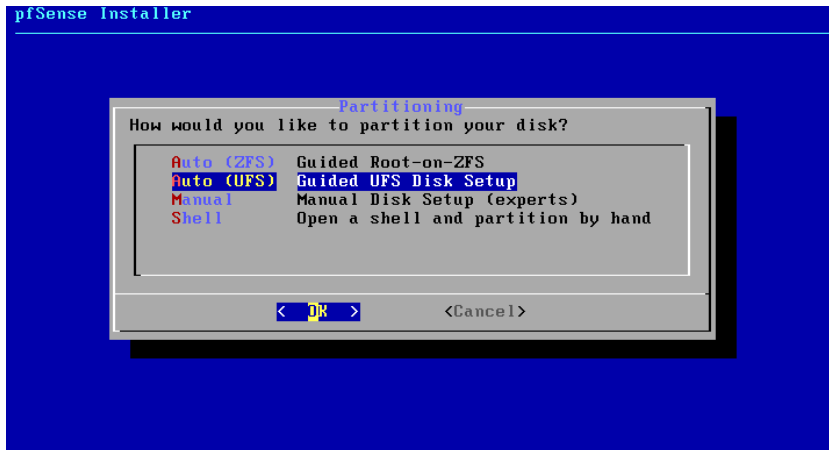
pfSense est un système d'exploitation open source ayant pour but la mise en place de routeur/pare-feu basé sur le système d'exploitation FreeBSD.

Pour l'installation de PfSense, nous utilisons VMWare Workstation 17, et d'un Iso PfSense

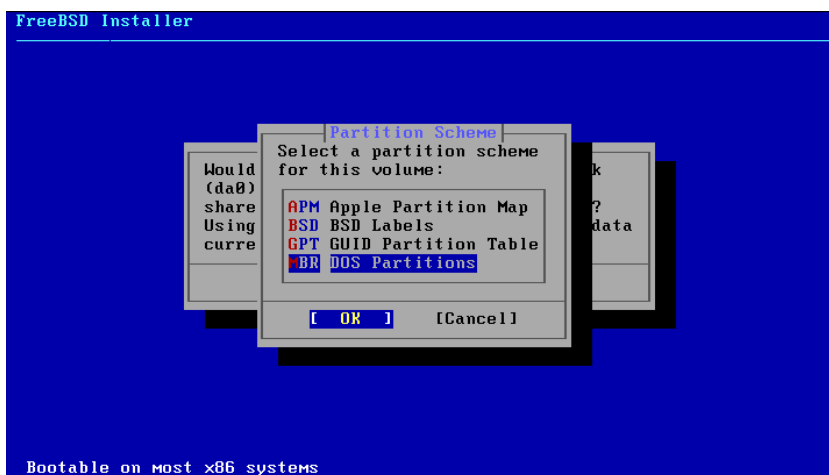
Configurer votre VM avec 2 CPU, 2 Go de RAM, un DD de 20 Go



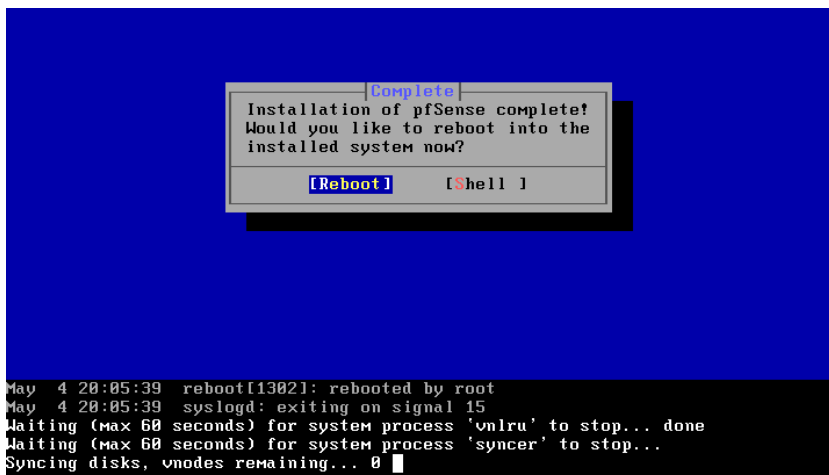
Choisissez Auto (UFS)



Choisissez MBR Dos Partitions



Pour finalisez l'installation, faites reboot.



Une fois sur l'interface nous nous rendons sur « Set interface IP Address » pour s'y rendre nous appuyons sur 2 de notre clavier

```
Starting syslog...done.
Starting CRON... done.
pfSense 2.7.1-RELEASE amd64 20231115-1706
Bootup complete

FreeBSD/amd64 (pfSense.home.arpa) (ttyv0)

UMware Virtual Machine - Netgate Device ID: 0ba9005ca24a5e4d36ba

*** Welcome to pfSense 2.7.1-RELEASE (amd64) on pfSense ***

WAN (wan)      -> em0      -> v4/DHCP4: 192.168.12.132/24
LAN (lan)      -> em1      -> v4: 192.168.1.1/24

0) Logout (SSH only)          9) pfTop
1) Assign Interfaces          10) Filter Logs
2) Set interface(s) IP address 11) Restart webConfigurator
3) Reset webConfigurator password 12) PHP shell + pfSense tools
4) Reset to factory defaults  13) Update from console
5) Reboot system              14) Enable Secure Shell (sshd)
6) Halt system                 15) Restore recent configuration
7) Ping host                   16) Restart PHP-FPM
8) Shell

Enter an option: █
```

Nous allons configurer l'interface LAN

L'option Configure IPv4 address LAN interface via DHCP? Nous mettons "n" pour NON afin de pouvoir choisir notre propre adresse IP. En adresse IP on va choisir pour notre part 192.168.1.70 et en masque de sous réseau en /24 (255.255.255.0)

```
6) Halt system                15) Restore recent configuration
7) Ping host                   16) Restart PHP-FPM
8) Shell

Enter an option: 2

Available interfaces:

1 - WAN (em0 - dhcp, dhcp6)
2 - LAN (em1 - static)

Enter the number of the interface you wish to configure: 2

Configure IPv4 address LAN interface via DHCP? (y/n) n

Enter the new LAN IPv4 address. Press <ENTER> for none:
> 192.168.1.70

Subnet masks are entered as bit counts (as in CIDR notation) in pfSense.
e.g. 255.255.255.0 = 24
     255.255.0.0   = 16
     255.0.0.0     = 8

Enter the new LAN IPv4 subnet bit count (1 to 32):
> 24█
```

```

Enter the new LAN IPv4 address. Press <ENTER> for none:
> 192.168.1.70

Subnet masks are entered as bit counts (as in CIDR notation) in pfSense.
e.g. 255.255.255.0 = 24
     255.255.0.0   = 16
     255.0.0.0    = 8

Enter the new LAN IPv4 subnet bit count (1 to 32):
> 24

For a WAN, enter the new LAN IPv4 upstream gateway address.
For a LAN, press <ENTER> for none:
>

Configure IPv6 address LAN interface via DHCP6? (y/n) n

Enter the new LAN IPv6 address. Press <ENTER> for none:
>

Do you want to enable the DHCP server on LAN? (y/n) n
Disabling IPv4 DHCPD...
Disabling IPv6 DHCPD...

```

Pour ce qui est de l'adresse IPv6 nous n'allons pas en saisir.

Une fois la configuration finis, appuyer sur ENTER puis notre interface sera accessible via l'adresse IP ci-dessous 192.168.1.70

```

DHCPD...

The IPv4 LAN address has been set to 192.168.1.70/24
You can now access the webConfigurator by opening the following URL in your web
browser:

      https://192.168.1.70/

Press <ENTER> to continue. █

```

Une fois sur l'interface de connexion, le login par défaut est **admin** et le mot de passe **pfSense**

Une fois sur l'interface appuyez sur Next

The screenshot shows the pfSense web interface. At the top, there is a navigation menu with options like System, Interfaces, Firewall, Services, VPN, Status, Diagnostics, and Help. A warning message is displayed: "WARNING: The 'admin' account password is set to the default value. Change the password in the User Manager." Below this, the breadcrumb trail shows "Wizard / pfSense Setup /". The main content area is titled "pfSense Setup" and contains the following text: "Welcome to pfSense® software! This wizard will provide guidance through the initial configuration of pfSense. The wizard may be stopped at any time by clicking the logo image at the top of the screen. pfSense® software is developed and maintained by Netgate®". There are two buttons: "Learn more" and "Next".

WARNING: The 'admin' account password is set to the default value. [Change the password in the User Manager.](#)

Wizard / pfSense Setup / General Information



Step 2 of 9

General Information

On this screen the general pfSense parameters will be set.

Hostname

Name of the firewall host, without domain part.

Examples: pfsense, firewall, edgefw

Domain

Domain name for the firewall.

Examples: home.arpa, example.com

Do not end the domain name with '.local' as the final part (Top Level Domain, TLD). The 'local' TLD is widely used by mDNS (e.g. Avahi, Bonjour, Rendezvous, Airprint, Airplay) and some Windows systems and networked devices. These will not network correctly if the router uses 'local' as its TLD. Alternatives such as 'home.arpa', 'local.lan', or 'mylocal' are safe.

The default behavior of the DNS Resolver will ignore manually configured DNS servers for client queries and query root DNS servers directly. To use the manually configured DNS servers below for client queries, visit Services > DNS Resolver and enable DNS Query Forwarding after completing the wizard.

Primary DNS Server

Secondary DNS Server

Override DNS

Allow DNS servers to be overridden by DHCP/PPP on WAN

[Next](#)

Choisissez un nom de domaine et un hostname puis faire next



Step 3 of 9

Time Server Information

Please enter the time, date and time zone.

Time server hostname

Enter the hostname (FQDN) of the time server.

Timezone

Next



Step 4 of 9

Configure WAN Interface

On this screen the Wide Area Network information will be configured.

SelectedType

General configuration

MAC Address
This field can be used to modify ("spoof") the MAC address of the WAN interface (may be required with some cable connections). Enter a MAC address in the following format: xxx:xxx:xxx:xx:xx or leave blank.

MTU
Set the MTU of the WAN interface. If this field is left blank, an MTU of 1492 bytes for PPPoE and 1500 bytes for all other connection types will be assumed.

MSS
If a value is entered in this field, then MSS clamping for TCP connections to the value entered above minus 40 (TCP/IP header size) will be in effect. If this field is left blank, an MSS of 1492 bytes for PPPoE and 1500 bytes for all other connection types will be assumed. This should match the above MTU value in most all cases.

Static IP Configuration

IP Address

Subnet Mask

Upstream Gateway

DHCP client configuration

DHCP Hostname
The value in this field is sent as the DHCP client identifier and hostname when requesting a DHCP lease. Some ISPs may require this (for client identification).

PPPoE configuration

PPPoE Username

PPPoE Password

Show PPPoE password Reveal password characters

PPPoE Service name
Hint: this field can usually be left empty

PPPoE Dial on demand Enable Dial-On-Demand mode
This option causes the interface to operate in dial-on-demand mode, allowing a virtual full time connection. The interface is configured, but the actual connection of the link is delayed until qualifying outgoing traffic is detected.

PPPoE Idle timeout
If no qualifying outgoing packets are transmitted for the specified number of seconds, the connection is brought down. An idle timeout of zero disables this feature.

PPPoE configuration



Step 5 of 9

Configure LAN interface

On this screen the Local Area Network information will be configured.

LAN IP Address

Type dhcp if this interface uses DHCP to obtain its IP address.

Subnet Mask

Next

Choisissez un mot de passe admin pour ma part j'ai choisi root

Step 6 of 9

Set Admin WebGUI Password

On this screen the admin password will be set, which is used to access the WebGUI and also SSH services if enabled.

Admin Password

Admin Password AGAIN

[Next](#)

Wizard / pfSense Setup / Reload configuration

Step 7 of 9

Reload configuration

Click 'Reload' to reload pfSense with new changes.

[Reload](#)

Wizard / pfSense Setup / Wizard completed.

Step 9 of 9

Wizard completed.

Congratulations! pfSense is now configured.

We recommend that you check to see if there are any software updates available. Keeping your software up to date is one of the most important things you can do to maintain the security of your network.

[Check for updates](#)

Remember, we're here to help.

[Click here](#) to learn about Netgate 24/7/365 support services.

User survey

Please help all the people involved in improving and expanding pfSense software by taking a moment to answer this short survey (all answers are anonymous)

[Anonymous User Survey](#)

Useful resources.

- Learn more about Netgate's product line, services, and pfSense software from our [website](#)
- To learn about Netgate appliances and other offers, visit our [store](#)
- Become part of the pfSense community. Visit our [forum](#)
- Subscribe to our [newsletter](#) for ongoing product information, software announcements and special offers.

[Finish](#)

Cliquez sur Finish, puis la configuration sera termin 

Voila PfSense est pr t   l'emploi.

